

Letter of Introduction

We live in the middle of the greatest social, humanitarian and health care crisis that the world has ever known. However, it does not garner the headlines of newspapers and TV news shows the way an earthquake or a tsunami can. It does not make for the vivid pictures the way floods, hurricanes, or cyclones do. Television satellite trucks are not on site to cover the disaster. Many of the victims of this disaster are perishing alone in the solitude of a shack house, lying on a tattered mattress on a dirt floor. Many of the victims are young, never having had the opportunity to fulfill their potential. Most of the victims of this disaster are being killed by someone they loved. There will be other victims. Many orphans are being left behind because mother and father have killed each other. Older brothers and sisters will turn to crime and prostitution to be able to feed their siblings. The children are dropping out of school because there is no money to pay for fees, books and uniforms. A generation of children is growing up around us without the direction of a parent or even a teacher to prepare them for life. Life forces the children to become selfish survivalists. Furthermore, our American donors have come on board to enable us to assist previously disadvantaged South Africans to acquire both High School Education and College Education. Brief overview of our required and current spend below proves that we are already making a difference.

- Department of Social Development Grant of R1.2 million for our OVC Programs
- Bojanala Municipality has allocated our expansion program 9.0 HA of land in the city of Rustenburg.
- We are currently raising R 29,525,000 for the building of a new community center consisting of dedicated shelters for babies, children, & women; a clinic; staff housing and a church auditorium.
- Our plan is to spend approximately R1,68 million a year through direct donor support to pay for the education of previously disadvantaged South Africans at various High Schools and Colleges.

All the stakeholders have united efforts and resources to make a difference in turning the tide for many communities in the North West Province because we believe that all of us together we can achieve extraordinary outcomes.

Dr. Tshepo S. Tshetlo
Chairman of the Board

Program Technical Details

Name of the organization:	Touch Community Network t/a Lighthouse Children's Shelter
Physical Address:	14 Waterfall Road, Rustenburg
Postal Address:	P.O. Box 21398, Protea Park 0305
Contact Person:	Dr. Tshepo Tshetlo
Head Office:	Las Vegas House, 20D Warren Street, Mafikeng, 2745
Contact Details:	Tel. 018 381 3702 Fax. 018 381 4275 E-mail: tstshetlo@yahoo.com
Registration Details:	Lighthouse Children's Shelter: 016 – 270 NPO

Touch Community Network:

Sec 21 Company Registration No. 98 24973

SARS Ref. No. : 18/11/13/2441

Department of Social Services Registration No.: 3/2/3/06

Financial Details

Bank details: Standard Bank Cheque Account #033122342

Financial management system: Pastel

Auditing firm: JP Associates

Audited financial statements: attached

Profile of the Organization

Executive Summary

International Faith Ministries is a Faith Based Organization registered in the Republic of South Africa and has been in existence since 1991. Since its inception International Faith Ministries has focused on reaching poor communities with the gospel of Jesus Christ. It is in this interaction with primarily rural communities that we came face to face with the stark and harsh realities of poverty that millions of people face on a daily basis in our country. Consequently, the leadership of the Church made a strategic decision to confront poverty head-on. For this purpose IFM Church registered a section 21 Network with a myriad of non-profit Organizations to tackle socio-economic problems and to make a positive contribution to improving the plight of millions of our people. In addition, our thrust is also to facilitate financial assistance of individuals who are capable of accessing High School and College education. Although our vision is still unfolding, here is how our organization is taking shape through the following organizations of the International Faith Ministries. Please see the organogram of organizations that form part of our new practical approach to ministry among poor communities, villages, townships, and cities.

LCS Mission & Vision

Mission

The mission of the Lighthouse Children's shelter is to provide an emergency place of safety for abandoned youth, orphans and HIV positive children as well as providing quality, family style long-term care for children whose family structures have been destroyed. In addition, LCS endeavors to make facilitate educational assistance for previously disadvantaged South Africans.

Vision

It is our Vision to bring HOPE to children, youth and people in hopeless situations. By partnering with the greater Rustenburg community, it is the desire of Lighthouse Children's Shelter to firstly, provide a safe and loving environment to abandoned, neglected and HIV positive children, saving their lives from abuse and premature death. Secondly, LCS intends to educate and to place these children with adoptive families in South Africa and around the World.

History of the Organization

The leadership of International Faith Ministries Church took a strategic decision in 2001 to use asset of practical initiatives to intervene in a practical manner to confront socio-economic problems and other challenges that confront the previously disadvantaged and poor communities in the new democratic South Africa. The church mobilized a group of professionals and the members of the business to assist in this endeavor. Furthermore, all the stakeholders decided to use the already registered the Touch community Network as an umbrella for this strategy. In addition, Faith Based Organizations and Non-Profit Organizations were set-up and registered one after the other to tackle specific socio-economic challenges that plagued specific communities.

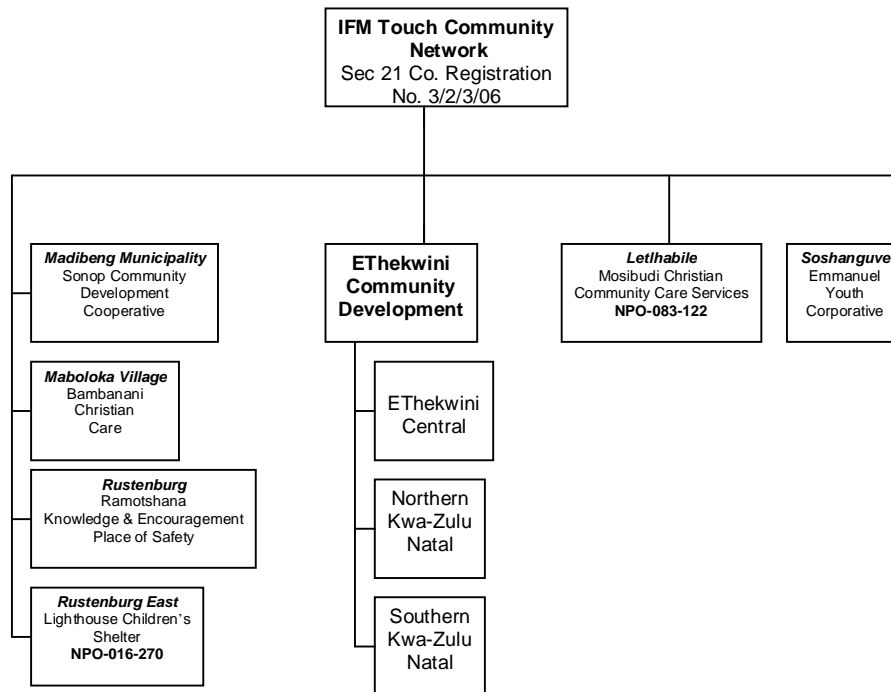
Under the oversight of the Touch Community Network, the Lighthouse Children's Shelter was registered with the relevant authority in the government of the Republic of South Africa to provide care for children in crisis and orphans to alleviate their suffering in any way possible. Starting with 36 children that consisted of HIV positive babies, youth in crisis, and a few would be mothers, LCS began to execute its vision.

It was not long after LCS was in operation that its leadership discovered that in addition to social needs that the children in this first group had, most of the children that had reached school age had no financial means or support to pursue their dreams. A team of missionaries from the United States with the assistance of a local IFM minister called Reverend Eliyah F.T. Khumalo embarked on fundraising campaigns both in the United States and also began engaging local business community with a view to make the attainment of education possible for previously disadvantaged South Africans.

In this manner LCS began a practical and effective work to meet the needs of those suffering from the effects of incurable diseases and those that were marginalized by poverty from receiving education. At that stage it was believed that there more than a million orphaned children living in South Africa due to the HIV virus. Out of a common vision and desire to see abandoned and orphaned children receive love and hope, the Lighthouse Children's Shelter was founded.

The vision of the International Faith Ministries that the Church should become a champion of good works among the suffering masses and be a witness of the love of God through practical acts of mercy became the driving force behind this thrust. Over the years many business people have continued to be involved in doing good works in many communities first in the Greater Bojanala Municipality, the city of Rustenburg and its surrounding villages and the North West Province at large.

Organizational Approach of the IFM Church on Social Justice



Service Record of the Organization

- Since beginning in July 2001, we have cared for almost 3000 children in crisis.
- Nearly 40 children have been adopted into families in South Africa and around the world.
- A 100% prevention rate in our Mother to Child transmission program.
- Another 350 plus children have been placed with extended family members once a safe location was found.
- Over the period 60 long-term HIV positive children have been cared for
- Sadly, we have experienced the death of several children to AIDS related illness.
- We have hundreds of volunteers from various organizations and churches throughout our community, and around the world.
- Over 1200 children have received financial assistance in their schooling programs.
- The Lighthouse has its own vegetable garden. We use the produce to help feed the children

and staff of the Shelter as well as distributing this produce in various informal settlements in the Greater Rustenburg area.

- We have provided full time employment to dozens of men and women, and will continue to grow in this regard into the future.
- There is a strong commitment to furthering the skills of all our staff through appropriate training courses, college education where appropriate and hand's on experience.

Policies Governing the Organization

No	TOPIC	DESCRIPTION
1	Asset & Inventory Control Policy	<ul style="list-style-type: none"> • Policy in place
2	Financial Management Policy	<ul style="list-style-type: none"> • JP Associates (accounting & auditors) plus pastel
3	Human Resource Policies	<ul style="list-style-type: none"> • LCS Leave Policy • LCS Procedures and Guidelines • Day Staff Checklist • Care Givers Evaluation Sheet • LCS Reference Letter • LCS Indemnity Letter
4	LCS Employment Contracts	<ul style="list-style-type: none"> • LSC MD's contract • Care Giver Coordinator contract • Laundry service contract • Property & Maintenance supervisor's contract • General maintenance contract • Care Giver Service contract • Children's Coordinator Service contract • House-Keeper's contract • Food Service contract • Part-time Service Contract • Service contract
5	LCS Job Descriptions	<ul style="list-style-type: none"> • Care Giver Coordinator's job description • Laundry Organizer/ Attendant contract • Care Giver's job description • Children's Coordinator job description • House Keeper's job description • Cook's job description • Day staff check-list

Community Profile & Program Details

The Lighthouse Children's Shelter is located in the city of Rustenburg, in the Bojanala district of the Northwest Province. Due to the number of mines in our city, we see many squatter camps and informal settlements that have sprung up over the years. Although our government is certainly making an impact via RDP houses, Social Development efforts, and free clinics, we still see many children who are being abandoned or not receiving adequate care at home. In many of these areas, we also see the impact of the lack of proper water, electricity, or sanitation facilities: many children are sick, malnourished, lacking adequate clothing, dirty, dehydrated, and in crisis.

According to the Children's Institute of South Africa, UNICEF, and South African government websites, the children of the North West Province are in crisis. In 2009, there were 151,544 orphans in the NW; already in 2010, there are counted 161,720 orphans here. More than half of these orphans are left with only a mother who cannot earn enough salary to support a family, and many are left with no adult family members at all. 68% of the children in the NW live in households earning the lowest 40% of wages. 38% of the children in the NW live in households in which no adult is employed. 682,991 children in the NW received child support grants in 2009, and thousands more who were eligible were still in the streets with no safe place to go. 17% of all pregnant women in the NW are reported to be HIV+ and will not live to see their children grow up. 14% of the 15-19-yr-old girls in the NW have been pregnant, most of who will not raise the babies to whom they give birth. Often due to malnutrition or young age of the mothers, 12% of the babies born in the NW weigh less than 2.5kg. Unfortunately, most of the mothers who give birth to such tiny infants are not equipped to care for their special needs. More than half (53%) of the children who do survive and are raised in the NW are Vitamin A deficient (malnourished) due to the lack of vegetables and proper care they receive. Nearly 1/5 (18%) of the children in the NW will go hungry today because there will be no food in their homes.

The statistics given above are startling and sad. However, the real problem is the impact of these statistics. The group most affected by poverty, hunger, and death is the children. When a parent or family is in crisis, abuse and abandonment are often inevitable unless there is some sort of intervention. Children are being left alone while single mothers struggle to find work that will not pay enough wages to support them. Mothers who are teenagers or HIV+ will abandon their children out of despair and desperation.

The Social Development Office is working hard to answer these needs. However, where can they take these children in crisis? There are only 3 children's shelters (places of safety) in the Rustenburg area. All 3 are desperately needed. NeoBirth Crisis Pregnancy is working hard to educate and support mothers in crisis, but many of them need a safe place for their children while they sort out their own crisis. Touch Community Network has representatives in a couple of the informal settlements to give support and resources to child-headed households, but many of the children need a safe, healthy, clean place to go. Our community needs Lighthouse Children's Shelter.

Each week, LCS receives calls or visits from CPU Officers who have babies and toddlers in need of a safe haven. We often have to turn these precious little ones away because we lack the funds to care for them. Several of the mines in our area (Samancor, Xtrata, Impala, Anglo-American, etc.) have stated a desire to "do something" to aid the children in crisis in our community. We can see that the needs of the children in the Rustenburg area are a priority for Social Development, police (Child Protection Unity), and other community businesses and organizations. We are willing to step up to meet the need, but we need help.

Target Groups

OBJECTIVES	TARGET AREA COMMUNITY	NO. OF BENEFICIARIES
<p>1. To provide a safe and a loving shelter for abandoned, HIV+ or AIDS affected children until a care home or adoptive family for the child is found.</p>	<p>HIV positive children</p> <p style="padding-left: 40px;">0 – 6 years</p> <p style="padding-left: 40px;">7 – 12 years</p>	<p>Currently, 20, New Shelter 35</p> <p style="padding-left: 40px;">New Shelter, 30</p> <p>The plan is to care for a total group of 120 in the new shelter.</p>
<p>2. To provide a safe place for a mother and her baby in need of care when she feels unable to care for her child for whatever reason.</p>	<p>Women in crisis</p>	<p style="text-align: center;">Begin with 20</p>
<p>3. To help and practically care for abandoned babies lying in hospitals without individual care.</p>	<p>Orphans</p>	<p>Currently, 20, New Shelter 35</p> <p style="padding-left: 40px;">New Shelter, 30</p> <p>The plan is to care for a total group of 120 in the new shelter.</p>
<p>4. To mobilize financial funding and donations in order to pay the cost of educating students with ability that is paralyzed by poverty or lack of financial resources.</p>	<p>Orphans, Young People, Staff, and Volunteers</p>	<p>Currently 12 High School Children</p> <p style="padding-left: 40px;">7 Primary School Children</p> <p style="padding-left: 40px;">1 Volunteer with College Admission</p>

Budget

Current Operating Budget Requirement for the Shelter (Excluding Education spend)

We are asking for your assistance. There are three primary need areas. One, we need assistance on a short term basis for the daily operational expenses of the shelter. You will find a breakdown of the current operational expenses in the table below. We need approximately R 86,693 a month to operate. We will be self sustaining following the development of our existing property as per our submission of the LCS Sustainability Plan.

Expenses	Costs
Disposable Nappies	R 3,100.00
Food	R 4,200.00
Toiletries	R 3,800.00
Medicine	R 3,100.00
Cleaning Products	R 2,600.00
Salaries and Wages	R 46,500.00
Insurance	R 3,900.00
Electricity and Water	R 6,000.00
Petrol	R 3,200.00
Office	R 4,200.00
Nursery Equipment/Misc	R 1,485.00
Standard Bank Loan and Interest	R 4,608.00
Operation Cost per month	ZAR 86,693.00

Three years of complete financial statements are available at any time to the public.

Budget for Educational Financial Assistance

For the 2011/2011 Financial Year our projection of spend in this category is in the region of R 1.7 million.

Budget for New Property Development

We're currently looking for a property that will accommodate the long term vision for the shelter which includes expanding our current capacity for younger children from 30 to 60, adding facilities for older children, ages 7 - 12, and providing a women's crisis facility. Provided the appropriate property can be found, care homes will also be built will that will allow us to provide permanent homes for un-adoptable children. The homes would be staffed with foster parents so that a proper home environment can be provided. A primary need for us is to locate and purchase and develop this new property.

On our new property we will also be erecting a series of homes that will be used as foster care homes for children that are not readily adoptable. Our new property will allow for the construction of 20 of these homes. Each foster home will care for up to 6 children. These are going to be long term care homes. Children coming into these homes will have the opportunity to grow up in these homes with a real family. The capacity for our long-term care facilities will be at least 120 at a time. Most of the children in this program will be there because adoptive parents' extended families are not available. We expect most of the children will be HIV positive.

On the grounds we hope to build a clinic, a community centre, a community kitchen, offices for staff and social workers, sports grounds, gardens, play-ground facilities and worker/volunteer housing. Infrastructure will also have to be build which will include sewer, water, roads and electrical facilities. Facilities will also be constructed for skills training.

Negotiations with the Bojanala Local Municipality have been ongoing for the Lighthouse to get a lease waiver for 9 hector tract of land that will be used to build the new shelter complex to provide holistic care to orphans, children in crisis, babies, and women in crisis. The budget that is tabulated below is compiled with the assumption that the municipality waiver the lease for the above mentioned land that it has already made available to the Lighthouse. Consequently, the budget forecast excludes the cost of the land on which the new facilities will be constructed. The required land was identified ten years ago when the negotiations with the municipality commenced and was granted howbeit with a condition to pay lease charges of R 40,000 a month. Negotiations with the municipality for a waiver of this fee are currently underway. As an organizations focused on the upliftment of previously disadvantaged communities, we think the waiver of the R 40,000 a month lease is an appropriate undertaking that the municipality should consider giving as a waiver to the people of the North West Province of the Republic of South Africa.

Project Milestone	Cost
Baby Shelter	
500 Sq. Meters x R3,000 per sqm. construction costs	ZAR 1,500,000.00
Additional Furnishings: for beds, desks, storage cabinets, office furnishings, kitchen and laundry appliances, etc.	ZAR 150,000.00
Children's Shelter	
500 Sq. Meters x R3,000 per sqm. construction costs	ZAR 1,500,000.00
Additional Furnishings: for beds, desks, storage cabinets, office furnishings, kitchen and laundry appliances, etc.	ZAR 300,000.00
Women's Shelter	
500 Sq. Meters x R3,000 per sqm. construction costs	ZAR 1,500,000.00
Additional Furnishings: for beds, desks, storage cabinets, office furnishings, kitchen and laundry appliances, etc.	ZAR 300,000.00
Office Complex	
500 Sq. Meters x R3,000 per sqm. construction costs	ZAR 1,375,000.00
Additional Furnishings: for furniture, computers, storage and filing cabinets, etc.	ZAR 300,000.00
Infrastructure:	
electrical, water and sewer construction, roads through property, parking, landscaping, outdoor sporting fields, security fence	ZAR 3,300,000.00
Foster Homes:	
20 Homes and Furnishings x R500,000 per home	ZAR 10,000,000.00
Staff Housing & Volunteer Apartments	ZAR 4,000,000.00
Community Center	
1500 Sq. Meters x R3,000 per sqm. construction costs	ZAR 4,500,000.00
Additional Furnishings	
Includes clinic, community kitchen, training facilities, etc	ZAR 800,000.00
TOTAL COSTS FOR NEW PROPERTY DEVELOPMENT	ZAR 29,525,000.00

Sustainability Plan

Our current property has been a tremendous location for us. However, because it is such a prime location, it has grown extremely valuable. It has become so valuable that we have had to start to consider it as an asset to be used in our journey to self-sustainability rather than just our shelter property. We have started a process to get the land registered with the local government so that it can be developed and the income from the development would be used to make the Lighthouse self-sustainable.

The development of our current property means that we need to be looking for a new location for the shelter. If we can purchase and develop a new home for the shelter, our long term self-sustainability needs will be met through the development of our current property.

We are seeking assistance in developing the current shelter property. The more assistance we receive in the development of the property, the greater profits we can return into the operational expenses of the Shelter operation. Above and beyond financial assistance, we

need professional assistance and guidance in this project so that we can maximize the return to benefit the Shelter.

We need assistance in purchasing a new property for the shelter. We have identified several properties that would allow us to immediately move our existing operation into existing buildings plus leave us room to expand to meet our long term vision. We are seeking assistance in purchasing one of these properties.

Our ultimate plan entails our negotiations with the city of Rustenburg for a 9 hector plot. We are at present renegotiating conditions of a long term lease this land. It is on this land that we will be able to execute all our plans for the expanded shelter complex.

Implementation Plan

Plan A

Continuation of the Current Lighthouse Children's Shelter on the Old Property (while waiting for the new facilities) is ongoing. What is required is the financial support for the operational costs of the Lighthouse children's Shelter to be met on a monthly basis. In this regard, plan A has been implemented since 2001.

Plan B - Construction and Operation of the New Complex

The new complex will consist of a baby shelter; a children's shelter; a women's shelter, an office complex, 20 foster care homes; staff & volunteer housing; a community centre; a church auditorium and a clinic.

OBJECTIVE	ACTIVITIES	INDICATORS	COSTS	DATE	RESP
Agreement with Rustenburg Municipality on the acquisition the 28 hectare land via lease waiver.	Application to the municipality	Signed agreement	R32 million	2011/12	IFM Church Board
Construction of a 500 sq. meter new baby shelter with furnishing.	Agreement with a Construction Company	Signed agreement	R1,650,000	2011/12	IFM Church Board
Construction of a 500 sq. meter Children's Shelter.	Agreement with a Construction Company	Signed agreement	R1,850,000	2011/12	IFM Church Board
Construction of a 500 sq. meter Women's Shelter.	Agreement with a Construction Company	Signed agreement	R1,850,000	2011/12	IFM Church Board
Construction of 20 foster homes	Same as above	Signed agreement	R10,000,000	2011/12	IFM Church Board
Construction of staff housing and volunteer apartments	Same as above	Signed agreement	R4,000,000	2011/12	IFM Church Board
Construction of a 1500 sq. meter Community Centre.	Same as above	Signed agreement	R5,300,000	2011/12	IFM Church Board
Construction of a Clinic.	Same as above	Signed agreement	-	2011/12	Our Medical Doctors
Construction of the necessary infrastructure: electrical, water and sewer construction, tarred roads, parking, outdoor sporting fields, and security fence.	Arrange with Municipality and plumbing Contractors	Signed agreement	R3,300,000	2011/12	IFM Church Board
Total Costs for New Property Development.	Funding Approval	Signed agreement	R29,525,000	2011/12	Dept. of Health & Soc. Dev.

In terms of continuity into the foreseeable future the Touch Community Network plans to develop local leaders and prepare them to run with its operations and organizations in the Republic of South Africa when the missionaries return to the United States of America. For the 2011 our leaders have after a rigorous selection process found one candidate that has the potential to be developed and groomed to run the new complex in the City of Rustenburg within the next five to ten years. In this regard our organization and its main stakeholder, International Faith Ministries Church has identified Revered Eliyah F.T. Khumalo as the recipient of its financial support to pursue a Master of Divinity graduate degree program at Fuller Theological Seminary in California. Upon his successful completion of the program, International Faith Ministries has established a compact with Touch Community Network for Rev. Eliyah F.T. Khumalo to be our candidate of choice for the leadership succession.

Conclusion

From time to time, the Lighthouse Children's Shelter has reached its peak capacity of accommodating and caring for vulnerable children, youth in crisis, and other members of the communities we operate in that face various risks. Some orphans have been adopted, but as soon as they leave, others arrive. On the previous pages you have read about our desire for the road ahead and by now are aware of the huge need in our country and community. A task of this magnitude cannot be achieved alone; we need the help of the all the stakeholders, members of the business community, the government of South Africa, and international donors to help make a difference. The great achievements of our country were not made by one person or even a handful of people, but they were achieved by committed people working together. Please consider the opportunity of making a difference to our future generation by contributing to the success of Lighthouse Children's Shelter.

"The Character of a country is defined by how it treats its children." – Nelson Mandela

"You have not lived a perfect day unless you have done something for someone who will never be able to repay you." – Ruth Smeltzer

"Carve your name on hearts and not on stone."
- Charles Spurgeon

Annexure A

L.C.S. Operational Management

USA Fundraising Director: David and Janis Betzer

Financial Manager: Elizabeth N. Muriuki

RSA Fundraising Officer: Rev. Elijah F.T. Khumalo (Volunteer)

LCS Child Care Manager: Jacqueline Seikanelo

Facilities Manager: Johannes Kekana

Gardening & Landscaping Manager: Eric Khuzwayo

Annexure B

Board Members

The Board of Directors is made up of leaders that have distinguished themselves in serving all the communities in the greater Rustenburg especially those in desperate need among the Previously Disadvantaged Individuals. The main criteria to become a member of the Touch Community Network is for any incumbent to have a track record of activity that alleviates the plight of the helpless, the poor, and the down trodden victims of pandemics and disasters. In addition, each Board member is expected to serve as a volunteer with no remuneration and also freely donate their expertise to fulfill the mission of the Touch Community Network. Over the past decade, the Lighthouse has been privileged with the contributions of board members from all the race groups represented in our community. International Faith Ministries would like to express its gratitude and appreciation for the distinguished leaders below who have selflessly served in the board of our Touch Community Network. On behalf of the communities from where the beneficiaries of our programs came, we thank you dearly.

Board of Directors

Dr. Tshepo S Tshetlo

Chairman of the Board: Touch Community Network, LCS & Tshetlo Enterprises

Dr. Neil van Schalkwyk

Neo Birth Crisis Centre

David and Janis Betzer

Lighthouse Children's Shelter

Johan van der Westhuizen

JP Associates

Dr. H.E. Khumalo

Bishop – International Faith Ministries Church

Rev. M.M. Matlhoko

Superintendant – IFM Church Christian Education Department

Audited Financial Statement

Audited Financial Statement

See attachment from our Auditors J.P. & Associates for the Touch Community Network.